



COLLECTION

A high-end, modern bedroom with a large bed, bedside tables, and a red wall panel. The room features a sophisticated design with a mix of dark wood, gold accents, and a large rug. The lighting is warm and ambient, highlighting the textures and materials. The overall atmosphere is one of elegance and comfort.


**Beauty and well-being should go hand in hand.**



**Inspired by Nature.**



**Designed for Innovation.**



TAI-LOR INTERPRETS THE CONTEMPORARY FUSION OF TWO WORLDS.  
AN INNOVATIVE PATENTED SYSTEM FOR AIR SANITISING, A STYLISH  
FURNISHING ITEM WITH A MODERN, HI-TECH APPEAL.

**TAI-LOR** *A design that breathes*



**A natural process,  
perfected by  
engineering.**

Photocatalysis, the technology behind TAI-LOR is inspired


**by chlorophyll photosynthesis.**

Just as leaves turn light and air into vital energy,

TAI-LOR uses light to make the air we breathe purer.

## Lab tests

Lab and field tests show that the **KTV patent** significantly increases the performance of photocatalysis, both in terms of time and activation rate. Thanks to the patented filter, the TAI-LOR panels are also able to deactivate the SARS-CoV-2 virus.



Scientific tests conducted by Dr. Elisa Vicenzi, San Raffaele Hospital in Milan, have proven that:

**AFTER 10 MINUTES  
98.2% of the viruses is deactivated.**

**AFTER 30 MINUTES  
the virus is completely deactivated.**

# The KTV patent

The core of TAI-LOR is a patented photocatalysis system, enhanced

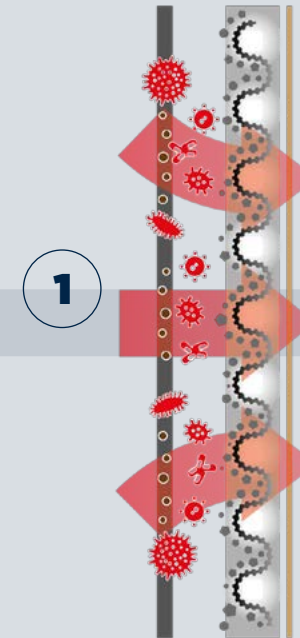
**by the innovative KTV filter.**

A technology that eliminates allergens, pollutants, pathogens, including viruses and bacteria, from all environments.

## FUNCTIONING OF THE KTV FILTER

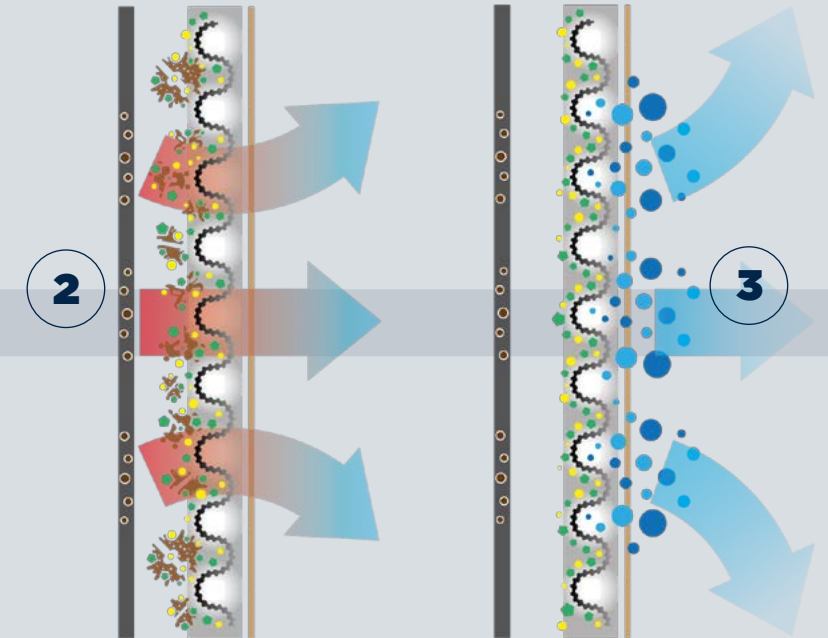
### PHASE 1

THE ASPIRATED AIR GOES THROUGH THE DUST FILTER TO ELIMINATE THE COARSEST IMPURITIES.



### PHASE 3

THE AIR COMES OUT PURIFIED AND SANITISED, WITH A VERY SMALL PART OF CARBON DIOXIDE, VAPOUR AND MINERAL SALTS.



### PHASE 2

THE AIR GOES THROUGH THE **KTV FILTER** THAT, THANKS TO THE PHOTOCATALYSIS REACTION, PRODUCES FREE RADICALS CAPABLE OF DESTROYING VIRUSES, BACTERIA AND VOC.

1

2

3

# The KTV technology and air purification systems

## AIR PURIFIERS

## PROS

## CONS

### **SANITISER featuring patented TAI-LOR® technology**

Removes 100 % of viruses, fungi, pathogenic bacteria in the air and on the surfaces. Does not release harmful by-products. Effective even on very high microbial loads. NO MAINTENANCE.

NONE

### **HEPA air purifiers**

Remove up to 99.97% of airborne and passing particles. Filters particles up to 0.3 micron.

Do not filter Sars-Cov2. Performance degrades over time. MAINTENANCE: Frequent and expensive due to periodic cleaning and replacement of the filter, a dangerous operation as viruses and bacteria remain active inside the filter.

### **Electrostatic Air Purifiers**

Remove up to 30% of particles from the air.

Excess ozone reacts with other components creating a health risk. No proven benefit in respiratory functions.

### **Ozone generators**

Remove persistent odours. Kill bacteria, mildews and microorganisms but are ineffective against viruses.

Ozone is effective at extremely high levels that are not compatible with the presence of people. It is an irritating substance for lungs and is extremely dangerous. The oxidizing effect damages all surfaces on which it sets down.

### **Activated carbon filters**

Effective for filtering gases and volatile organic compounds. Removes tobacco smoke and pet odours.

Performance degrades over time. Frequent and regular filter replacement is necessary. End-of-life disposal is problematic and expensive.

### **UV Ultraviolet light**

Effective as a germicide and deodoriser. Neutralises organisms, bacteria and viruses.

They produce ozone and are not suitable for use in the presence of people. The oxidising effect damages plastic polymers (accelerates ageing and leading to yellowing of surfaces). UV lamps are energy-intensive and have a short lifespan (one year), making them costly to replace frequently.

# Designed for Elegance

Clean lines, soft angles, harmonious proportions.

TAI-LOR Collection is designed to blend in discreetly.

**12 Unique designs**

**12 Soft-touch fabric colours inspired by luxury cars**

**144 Available options**

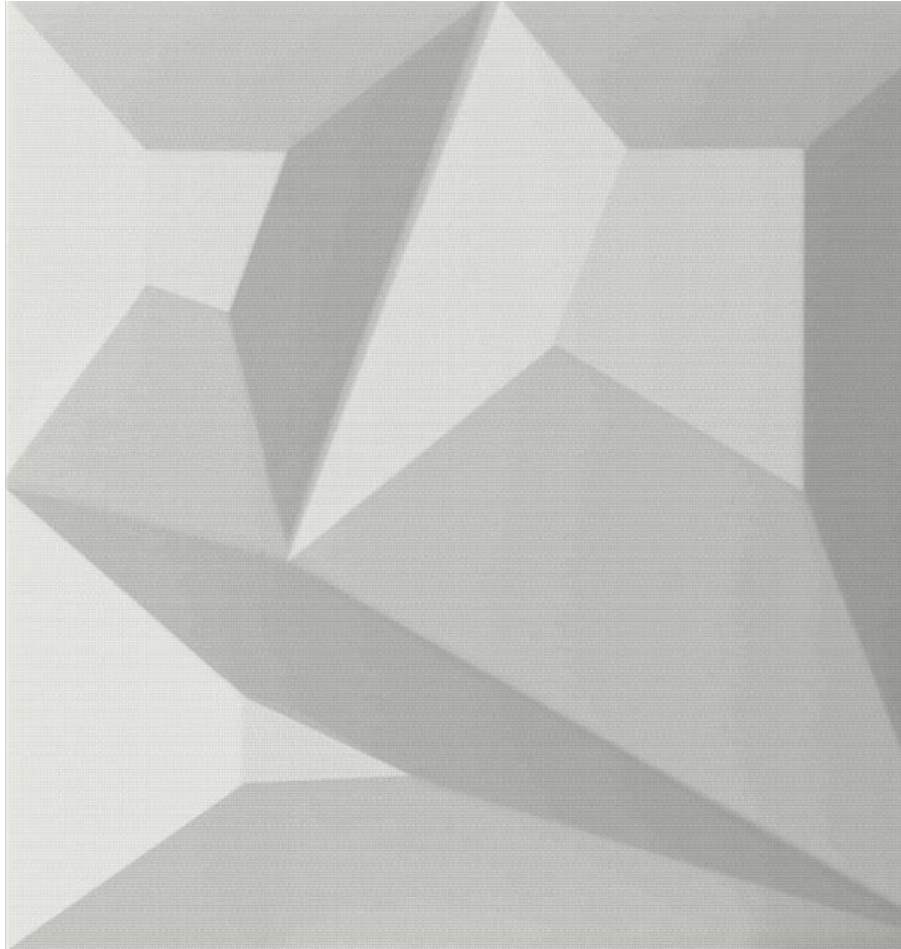
Endless customisation possibilities.



12

DESIGN

TAI-LOR COLLECTION



DESIGN  
**SINERGIA**



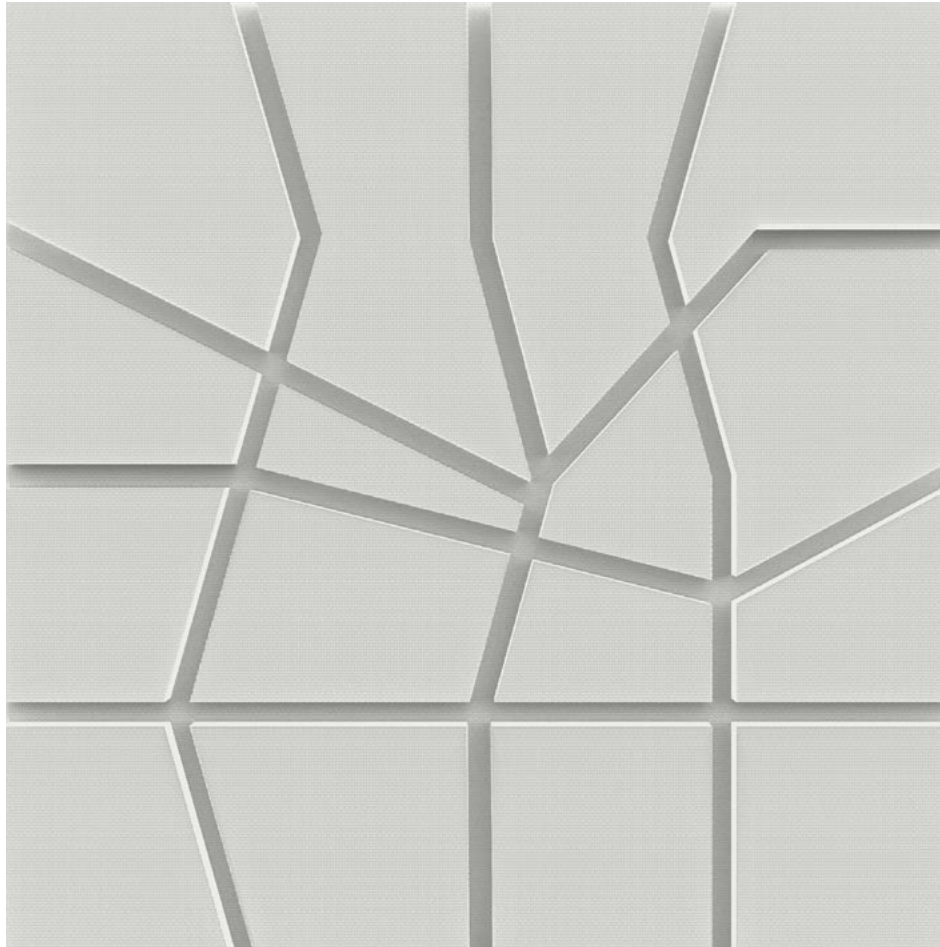
TAI-LOR COLLECTION



DESIGN  
**MIMESI**



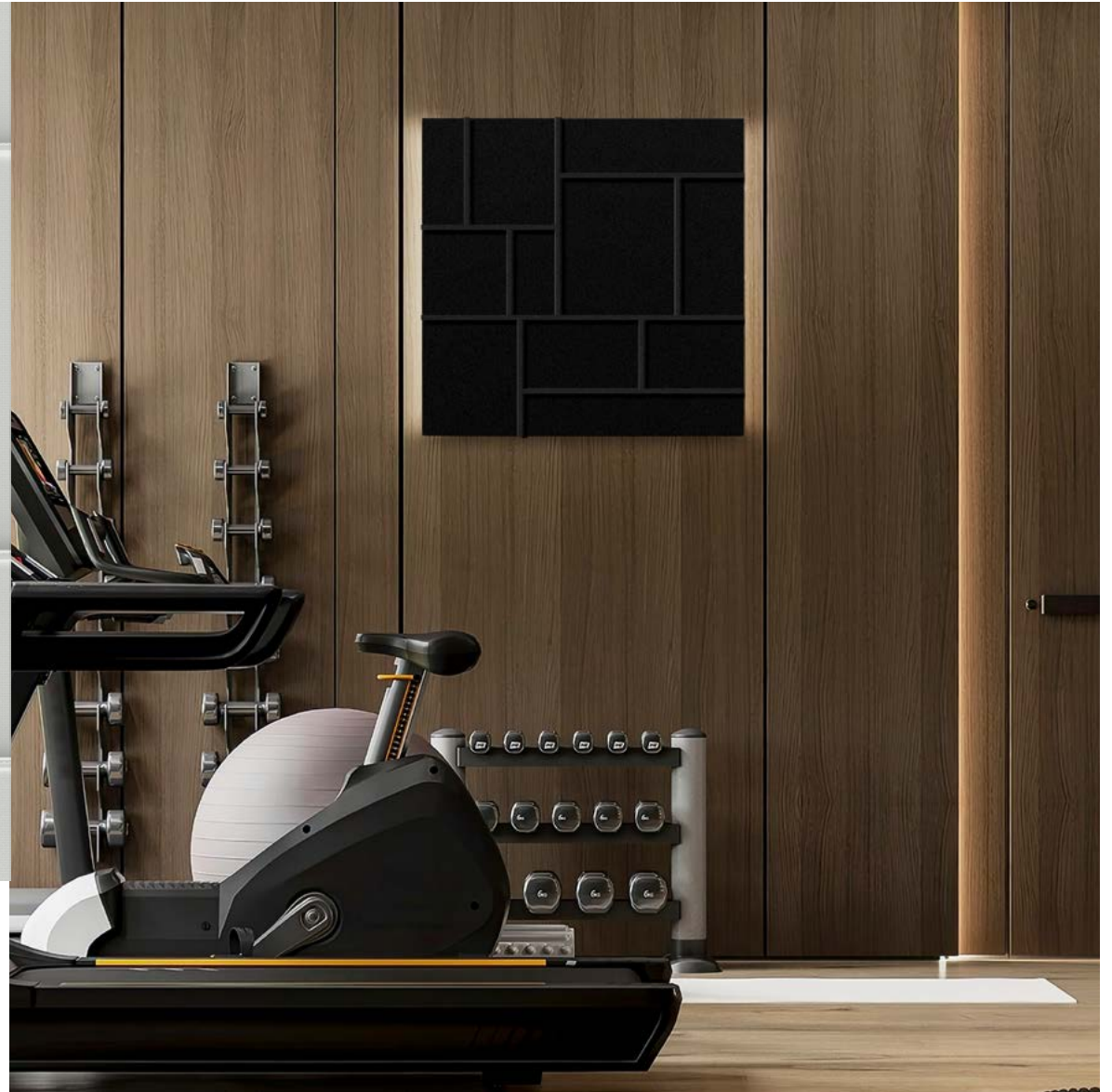
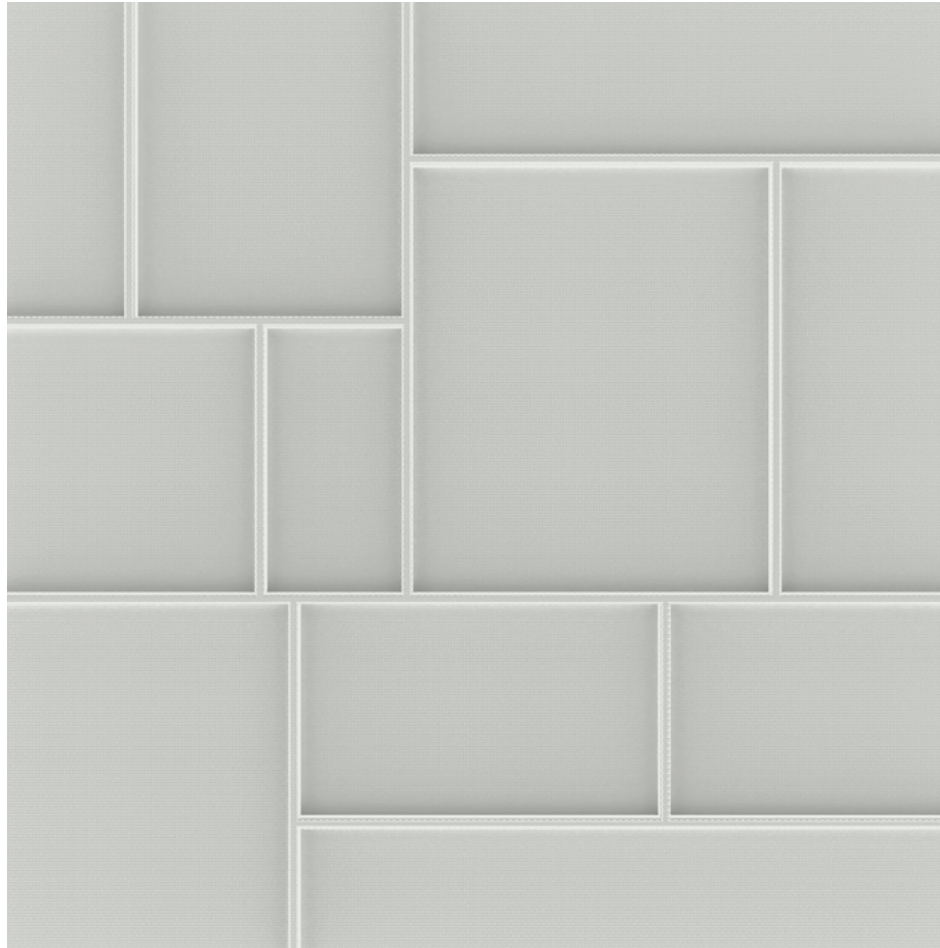
TAI-LOR COLLECTION



DESIGN  
**TRACCE**

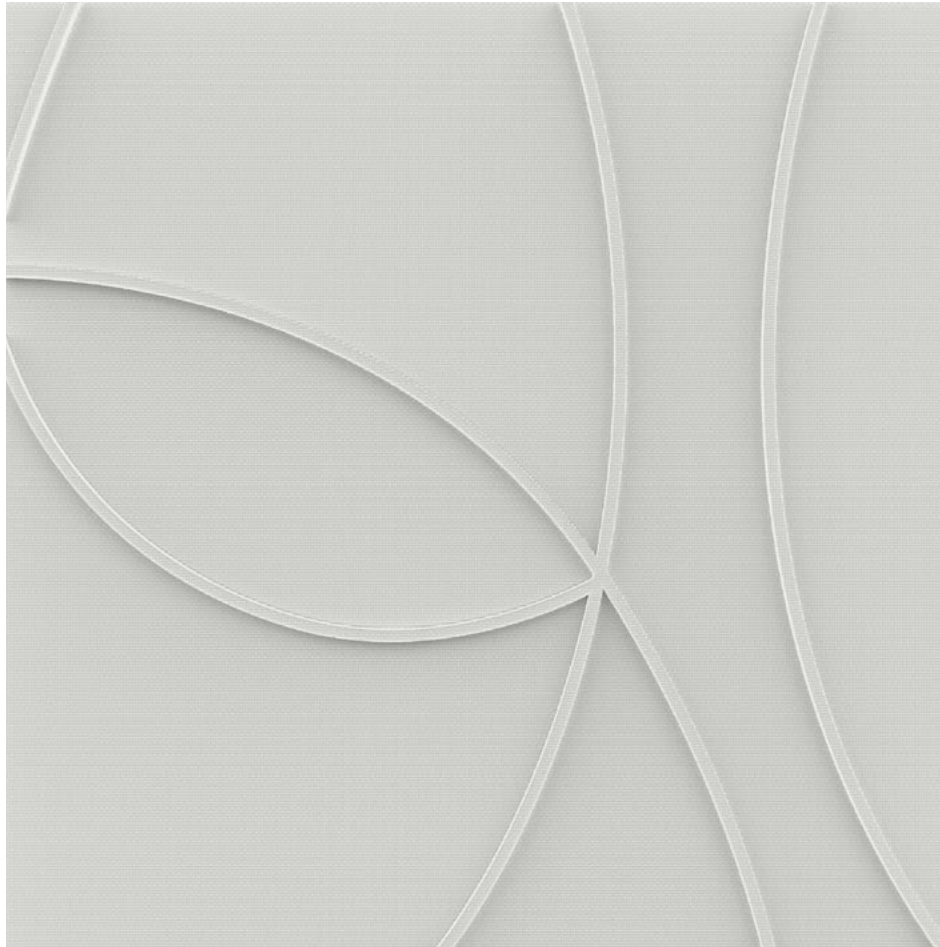


TAI-LOR COLLECTION



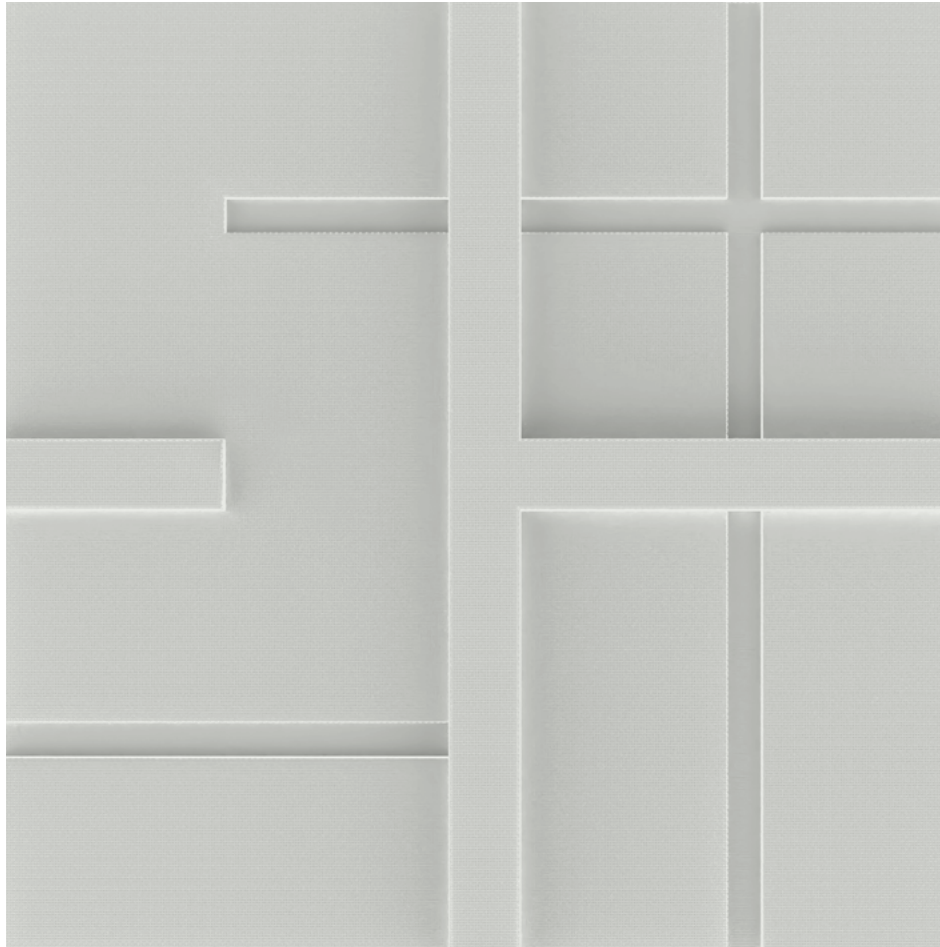
DESIGN  
**EQUILIBRIO**

TAI-LOR COLLECTION



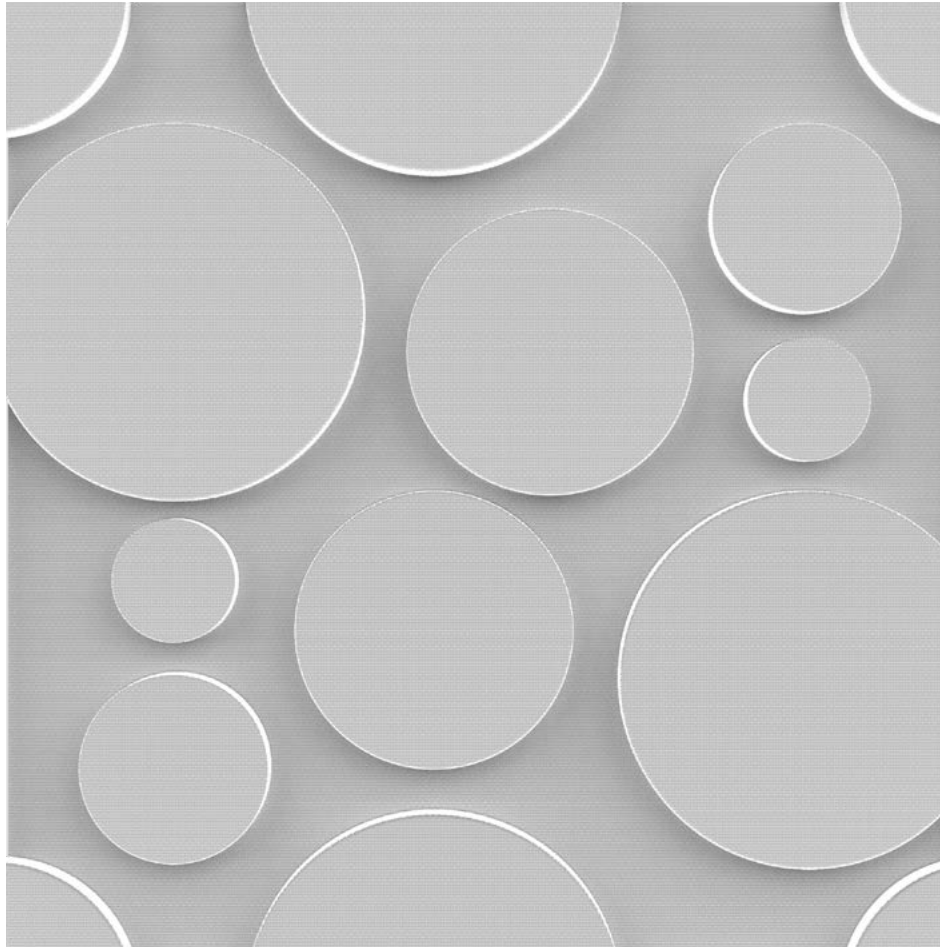
DESIGN  
**CORSIVO**

TAI-LOR COLLECTION



DESIGN  
**FORMA**

TAI-LOR COLLECTION



DESIGN  
**INCONTRI**



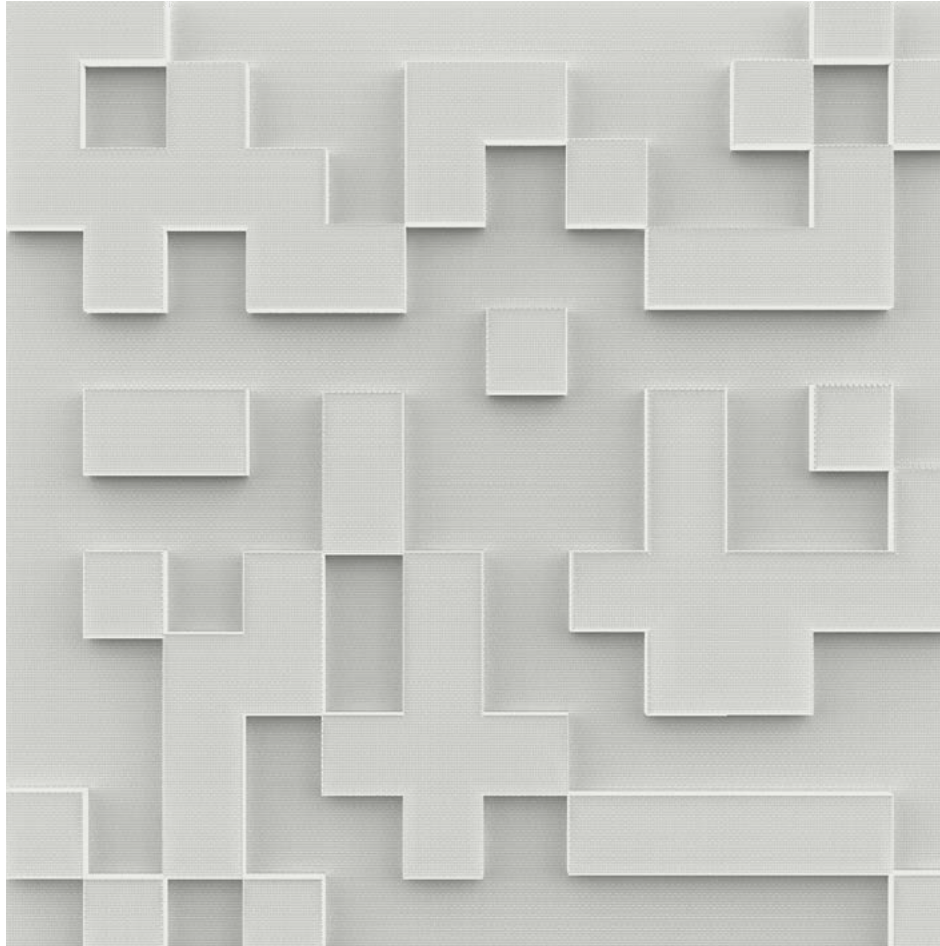
TAI-LOR COLLECTION



DESIGN  
**ONDE**



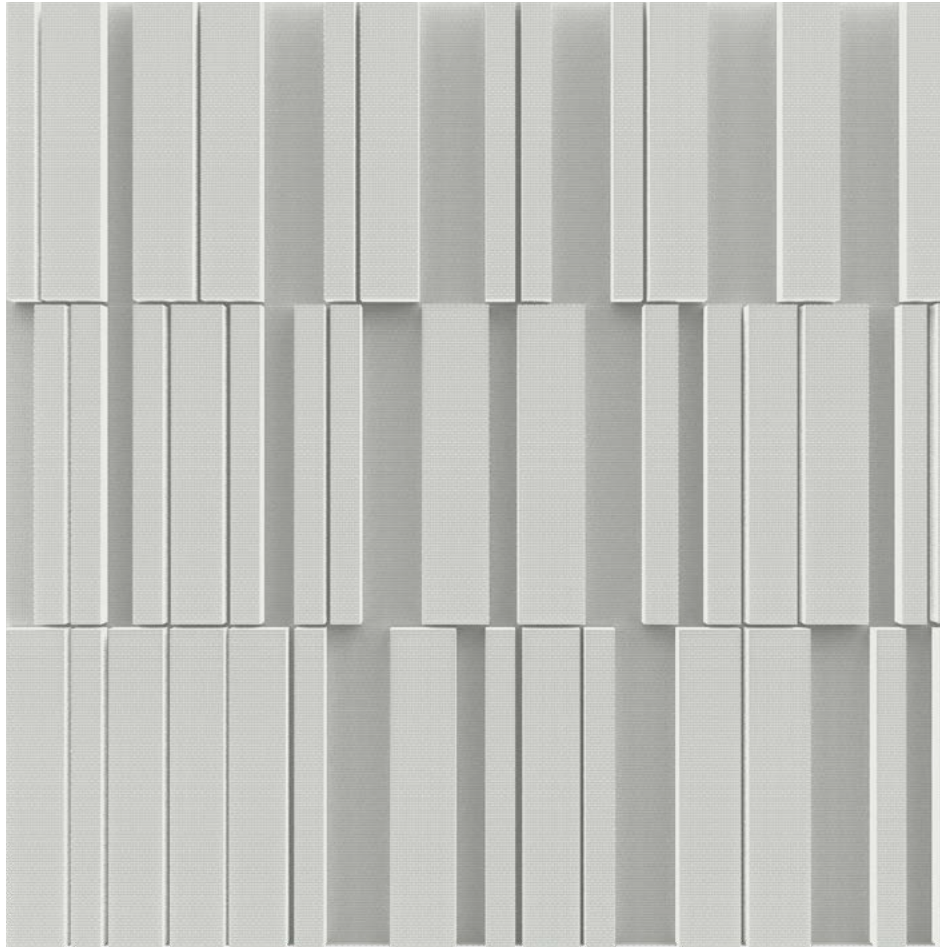
TAI-LOR COLLECTION



DESIGN  
**TETRA**



TAI-LOR COLLECTION



DESIGN  
**FRAMMENTI**

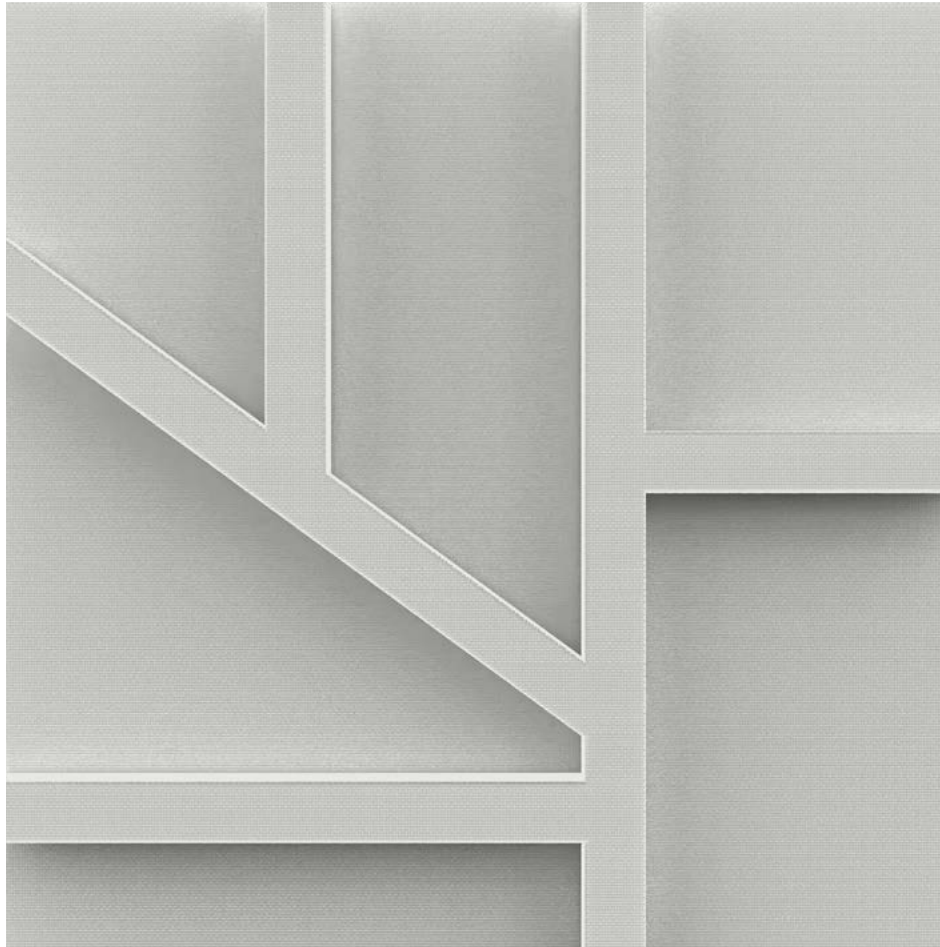


TAI-LOR COLLECTION



DESIGN  
**STELA**

TAI-LOR COLLECTION



DESIGN  
**ACCORDO**



12

COLOURS

TAI-LOR COLOURS



BEIGE



GREY



DARK GREY



BLACK



DARK GREEN



TEAL



BURGUNDY



DARK BROWN



SAPPHIRE



SILVEE



GOLD

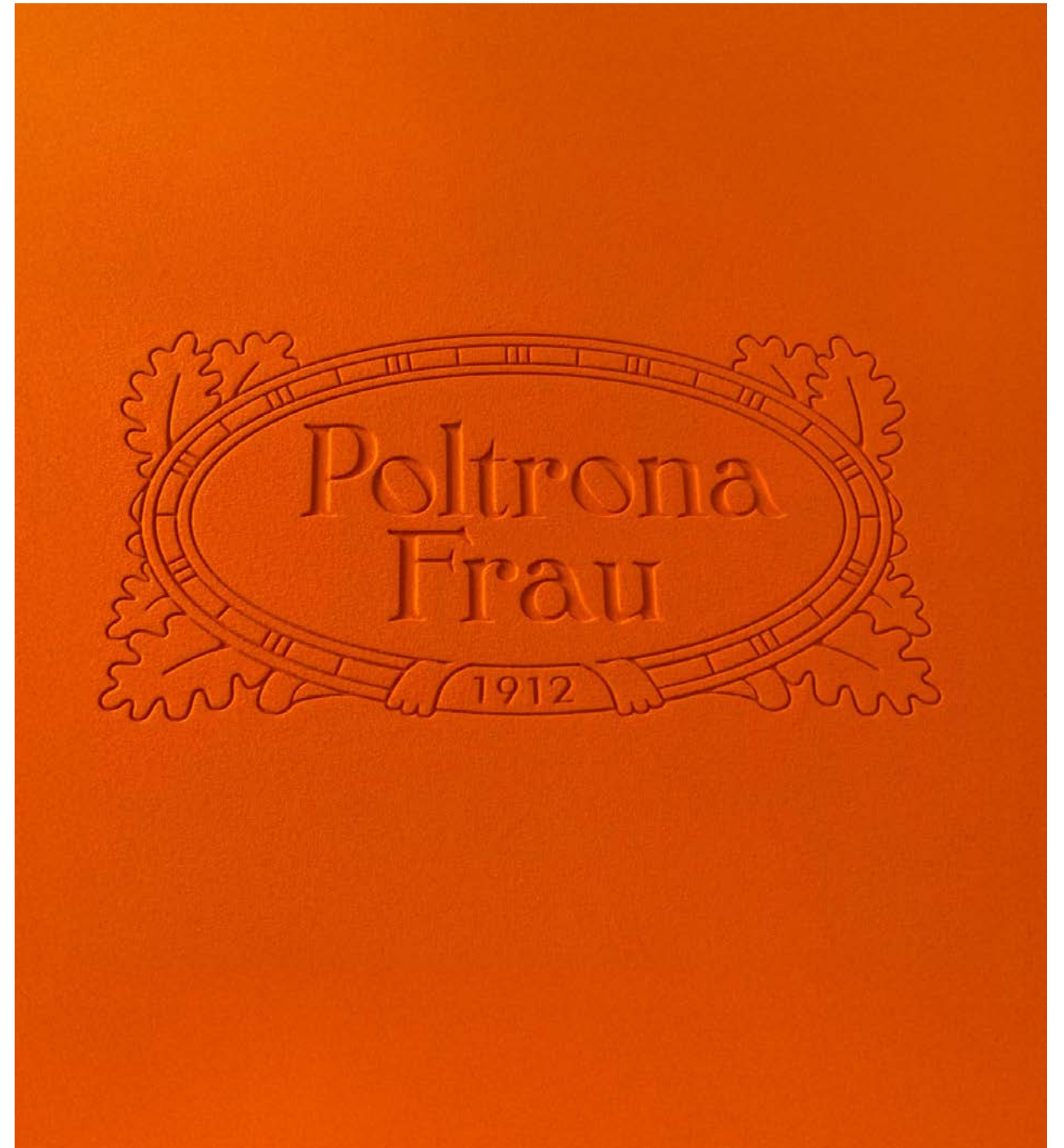


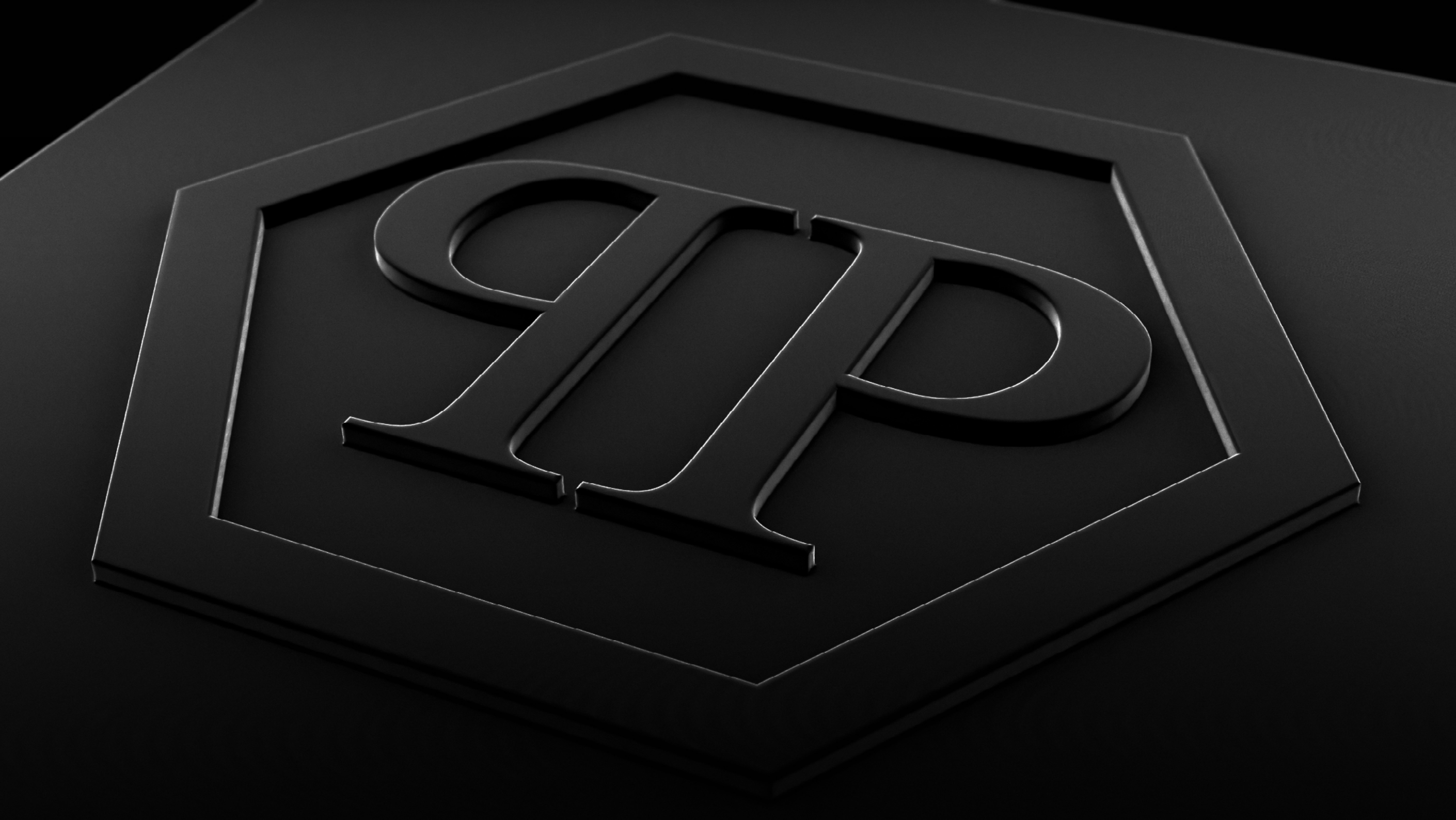
BRONZE

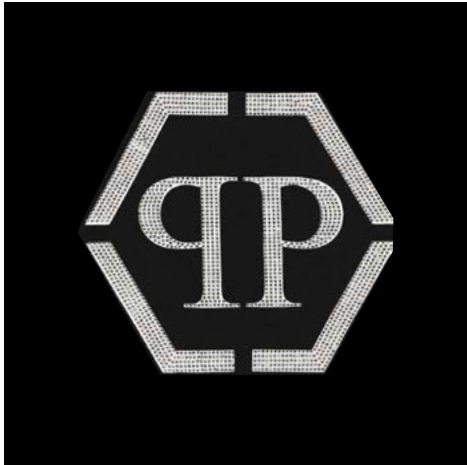


CUSTOM DESIGN

TAI-LOR can be customised  
in terms of design, colours and size.









# Hi tech feeling

The quest for perfection is not just about form but is also a matter of the careful choice of materials.

**TAI-LOR panels are coated in UVLux® microfiber,**

a material used for the interior trim of Ferrari, Rolls Royce, Porsche cars.

**Soft to the touch**

**UV-resistant**

**Water and stain repellent**



# Promau Environment Division

TAI-LOR Collection is a Promau Environment Division brand, the Promau Group division dedicated to innovation projects and well-being.

**Promau Group, more than 40 years of 100% made in Italy know-how**

at the service of the most iconic international automotive brands.

# Promau Group clients





COLLECTION